

TIRE PRESSURE MONITORING SYSTEM TPM 2.14 USB



Tire flat prevention



Tire wear reduction



Leakage warning



Tire unbalance prevention



Fuel saving



Mandatory countries

Sales Start

December 2014

Order Number

1 151 499 100 001

EAN Code

4 260275272465

Highlights

- Tire Pressure Monitoring System for car
- Cig Plug Display with USB
- All data is fixed and shown on display
- 1A USB Charger
- Individual pressure & temperature reading of each tire
- 4 external sensors
- 8 sensor caps (4x black color, 4x silver color)
- 5 anti-theft nuts, 5 washers, 1 spanner, 1 sensor tool, manual

TIRE PRESSURE MONITORING SYSTEM TPM 2.14 USB

Product Specification

Sensor:

- Operating frequency : 433.92 MHz
- Battery voltage: 1.8V ~ 3.3V
- Battery lifetime: ~ 2 years (model CR 1632)
- Operating temperature: -20°C ~ +60°C / -4°F ~ +140°F
- Pressure range: 0~3.5 Bar / 0~50 PSI

Display:

- Operating frequency: 433.92MHz
- Operating voltage: 12 +/- 3V
- Operating temperature: -20°C ~ +70°C / -4°F ~ +158°F

Default value:

- High pressure value: 3.3 Bar / 47 PSI
- Low pressure value: 1.7 Bar / 25 PSI
- High temperature value: 80°C / 176°F

Precision:

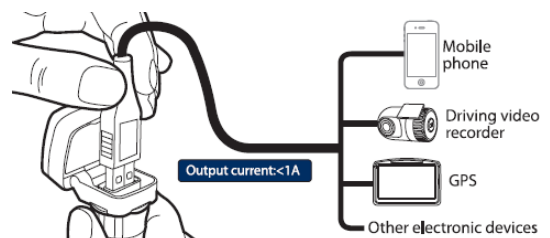
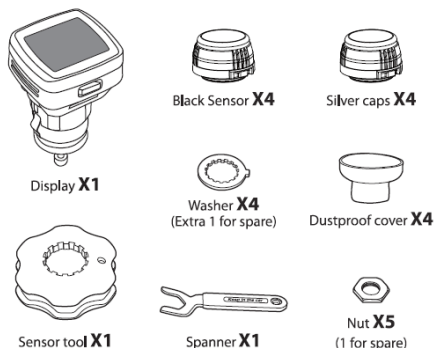
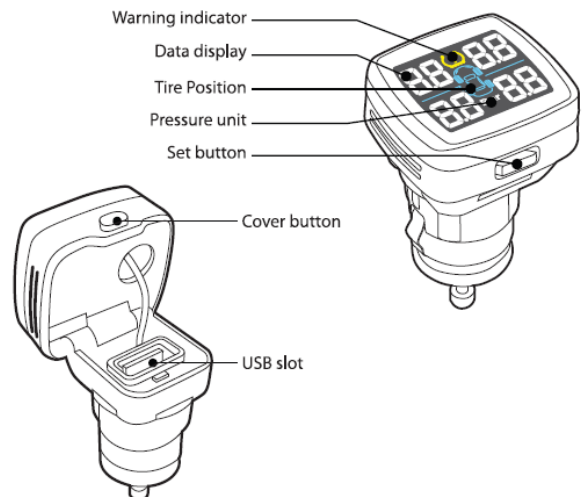
- Temp: +/- 1°C / +/- 2°F
- Pressure: 0.1 Bar / 1.5 PSI

USB charging slot:

- Operating voltage: 12 +/- 3V
- Operating temperature: -20C ~ +70C / -4F ~ +158F
- Output voltage: 5 +/- 0.2V
- Output current: 1A

Air pressure unit:

- 1 Bar = 14.5 PSI = 100 KPa = 1.02 Kgf/cm2



TIRE PRESSURE MONITORING SYSTEM TPM 2.14 USB

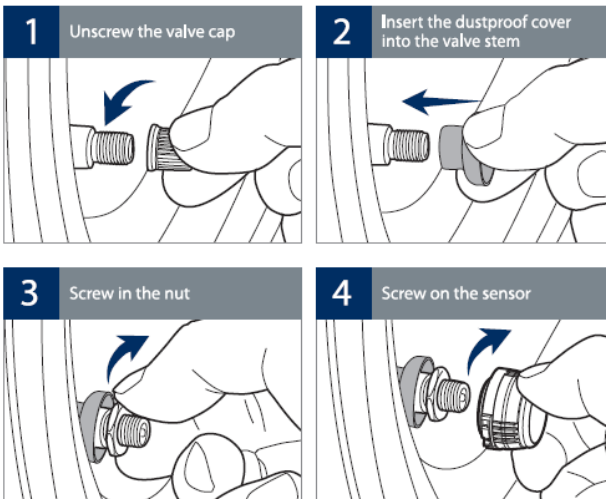
Different Scenarios for Tire Pressure Monitoring

Normal Display real time tire pressure of 4 tires together	Air leakage Fast leak: Bi-Bi- Slow leak: BI-BI-
High pressure Bi-Bi-Bi-	High temperature Bi-Bi-
Low battery Bi-Bi-	Sensor failure Bi-Bi-

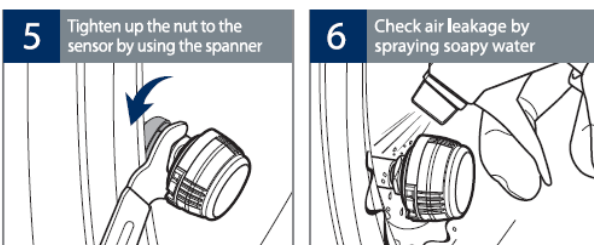
TIRE PRESSURE MONITORING SYSTEM TPM 2.14 USB

Easy “Do It Yourself” installation

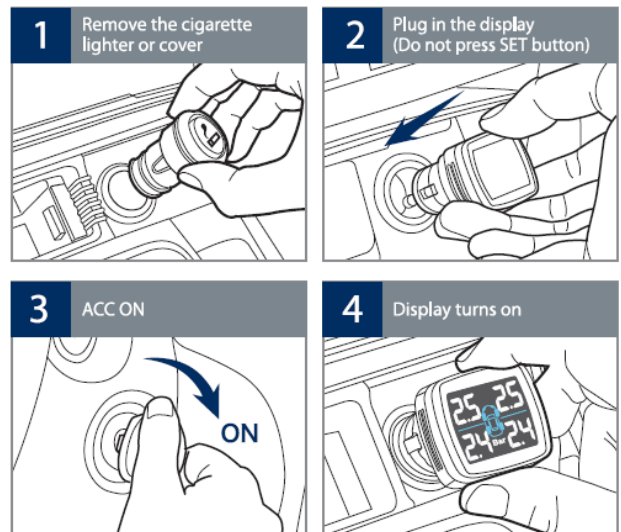
Sensor installation



Note: Each sensor has a marking to indicate the installation location. Please install the sensor to the corresponding wheel.



Display installation



Functional test after installation

